

OVER 130 YEARS OF MAKING LEXINGTON MORE BEAUTIFUL

Lexington Field & Garden Club



Dear Fellow Members:

It feels like a long time since our last meeting, and it has been—almost three months! I have fingers and toes crossed that we won't have another snow cancellation. It's time to be done with such things and to turn our sights toward spring.... We can start this month, with an armchair visit to the Chelsea Flower Show and making plans to see the Boston Flower & Garden Show in March (page 3).

Our Arbor Day (April 29) and Garden Tour (June 4) committees have been working hard on plans for these wonderful rites of spring. Soon we'll also be gearing up for the Plant Sale (May 18). Please, please plan to join us in both the work and the fun of these events. We need everyone's help, and there will be lots of sign-up opportunities starting next month.

Additional projects are starting to emerge in connection with the upcoming celebration of Lexington's 300th anniversary in March 2013. Festivities will likely run from September 2012 through May 2013, and we aim for LFCG to play a significant role. If you would like to get in on the ground floor of this planning, please let me know.

Another winter development has been long-awaited town approval of the traffic island signs. They're dark green and white. Look for them to sprout up in the spring.

Happy Valentine's Day! *Ann anniewebst11@gmail.com 781-862-1605*



VOLUME 1
ISSUE 5
FEBRUARY 2011

Inside this Issue:

Member News	2
Gardening Study School	
Althea Phillips Award	
Help Wanted	
Flower Show Info, Tickets and Bus	3
Native Tree Contest	
Christmas Tree Search	

FEBRUARY 9: National Heritage Museum 9:30 am refreshments, 10 am meeting/program

London's Chelsea Flower Show

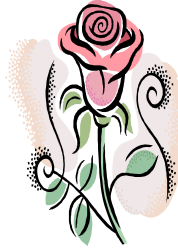


Our own **Maureen Bovet** took us on a tour of Paris gardens a few years ago. Now she'll take us to London for a fabulous visit to the world famous **Chelsea Flower Show**. Officially the Royal Horticultural Society's *Great Spring Show*, it is a five-day event each May covering 11 acres and always described in superlatives. We'll no doubt have spring in our minds and steps after Maureen gives us a taste of this spectacular feast for the eyes.



We'll stroll with Maureen through the show's outdoor garden rooms and admire plant delights under the tent. She'll also take us to the nearby walled Chelsea Physic Garden, opened in 1673.

We Remember



We are sad to have lost another member, Lois Lyons, in January:

A longtime resident of Lexington, Lois will be remembered for her dedication and enthusiasm in pursuing many interests, including bridge, skiing and Buckman Tavern. She was

very active in Wednesday Workshop and “always on the team” if help were needed.

We express our condolences to the Lyons family, who also lost Lois’s husband, Hugh, only three days earlier.

Welcome to Our Newest Member!

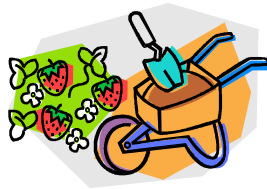
Donna Smatlak
22 Middle Street, Lexington, MA 02421
(781) 862-3802 dlsmatlak@yahoo.com

In Sympathy

Lynette Tsiang lost her husband, Richard (Dick) Ely in January. We extend our deep sympathy to Lynette and her family.

Gardening Study School April 7-9

This spring’s Gardening Study School is Course II, Series 9, and will be at Tower Hill, April 7 and 8, 8:30 am - 3:30 pm and April 9, 8:45 am - noon (exam).



There will be great speakers: Julie Weiss, Consultant on Container Gardening; Robert D. Childs from UMass Ext. on Understanding Plant & Garden Pests; Adriana O’Sullivan, Consultant on Tough Plants For Tough Places; Dawn Davies, Horticulturist at Tower Hill on Techniques of Growing Vegetables; and Paul Rogers, Horticulture Consultant with two lectures, How New Plants are Developed and Evaluated and Lawns and Lawn Alternatives.

For more information, refer to the January newsletter or contact Caroline Nijenberg, (781) 862-4465 or carolinen@rcn.com. You also can go to the GCFM website, www.gcfm.org; click on Schools and Registration.

Althea Phillips Award

Unfortunately we won’t be awarding our Althea Phillips scholarship this spring. The head of the Horticulture/Landscape Technology program at Minuteman High has determined that none of this year’s seniors qualify. Of course we are disappointed, but we appreciate the school’s respect for the award’s high standards and understand that there are promising juniors in the program. We are already looking forward to next year!



HELP WANTED



Right now we especially need volunteers for the following jobs. These are important responsibilities but not necessarily big time commitments. Please consider them seriously and contact the Chair or Ann Webster ASAP with questions and to sign-up. Thank you!!

- **Arbor Day Committee**—Help us plan this important annual celebration that has many facets, great traditions and room for new ones. Chair—Peg Bradley
- **Plant Sale Committee**—There’s quite a bit more to the sale than just potting, and planning will begin soon. This is our largest fundraiser, and we have a variety of important roles to fill. Chair—Jessie Foster
- **Atrium Plant Grooming at National Heritage Museum**—We keep the museum’s indoor plants neat and healthy with weekly visits through the year. Volunteers are needed for several weeks starting in April. The work is light and the hours are very flexible. Chair—Arline Landman



March 16-20
Seaport World Trade Center

The “new” flower show will be back for its second year, along with some additional features for our increased entertainment and comfort—such as arrangements by dozens of the region’s top professional florists, an amateur photography competition, a horticultural bookstore, more seating, more food options, and wider aisles amidst the displays and 240 vendors.



This year’s theme is ***A Burst of Color: Celebrating the Container Garden.*** Container gardens of all kinds will be featured in each of the creative displays and 25 show gardens. Dozens of ways to add vibrancy, warmth, and drama to any size space will be showcased.

Part of the show will be ***Blooms!***, organized by MassHort and the Garden Club Federation of MA. This is where top amateur floral designers and horticulturists show

off their beautiful arrangements and plants. And YOU could be one of the proud and prize-winning amateurs! Now’s the time to start thinking about entering a special house plant. Entry information can be found at www.masshort.org/Blooms-and-the-Boston-Flower-&-Garden-Show.



For details about the show’s lectures, demonstrations, exhibitors, hours and more, go to www.thebostonflowershow.com.

Discount Tickets:

We’ve obtained advance purchase discount tickets for you and your friends and family. They are \$16 (vs. \$20, \$17 Seniors at the door) and may be used any day of the show. They will be available for sale at our February and March Club meetings. Or you may purchase them by sending a check and stamped, self-addressed envelope to Marge Kent, 31 Hayes Ave., Lexington 02420. Please make checks payable to LFGC.



Bus to the Show:

Our Club bus trip will be on Thursday, March 17. We will depart Lexington at 9:15 am and return by 2:30 pm. Friends and family are welcome. The cost is \$12 per person. To reserve a seat, please pay at the February or March meeting, or by mail to Marge Kent. Please make checks payable to LFGC.



Native Tree Contest Reminder



Have you planted a native tree (or several) since November 1, 2009—on

your property or a public place? If so, please tell Jewel Kuljian (in writing) by mid-April so it can be included in our tally for the Garden Club Federation of MA’s contest. Why not tell her now and check it off your list?

For details about the contest and qualifying trees, please refer to the green insert that came with your September 2010 newsletter (also available on our website) or call Jewel.

Please send the following to Jewel Kuljian, 105 Meriam St., Lexington, MA 02420 or jkuljian@verizon.net:

- Your name
- Number of native trees planted
- Address(es) where trees planted
- Planting date(s)
- Latin and/or common name(s)

Thank you!!

Artificial Christmas Tree Search



At the end of the holiday season, perhaps you became aware of an artificial Christmas tree that is no longer wanted by its owners. Or maybe you will this spring or summer, through clean-up projects, yard sales, etc....Please keep LFGC in mind for trees in good condition (any size) that need adoption or can be obtained inexpensively. We aim to participate in MassHort’s Festival of Trees again, and a free or low cost “recycled” tree will help us be more generous in other ways. Thanks for keeping your eyes and ears open!

What's Going On?

- February 9** **Main Club Meeting:** Chelsea Flower Show with Maureen Bovet
- February 24 - 27** Rhode Island Spring Flower & Garden Show www.flowershow.com
- February 28** Morning of Horticulture—The Pollinator Garden, Espousal Center, Waltham, 10am
Make you garden inviting and sustainable to birds, bees and butterflies
- March 9** **Main Club Meeting:** All You Need to Know about Successful Pruning
Joint Meeting with the Belmont Garden Club
- March 16 - 20** Boston Flower & Garden Show, Seaport World Trade Center
- March 17** **LFGC Bus Trip to Boston Flower & Garden Show—sign up with Marge Kent**
- March 28** Morning of Horticulture—Succulent Plants in House & Garden, Espousal Center, 10am
- March 29** Civic Development Workshop—Landscape Design Considerations for Historic Properties
Espousal Center, Waltham Preregistration required. See www.gcfm.org.

Coming in March...



Jeanie Gillis, award-winning Director of Horticulture at Heritage Museums & Gardens in Sandwich, will give us the hows and whys of keeping our plants in good shape. She'll demonstrate **pruning** techniques and tools and wants lots of questions. Please start making your mental lists!

We also look forward to sharing this meeting with the Belmont Garden Club.



Lexington Field and Garden Club

P.O. Box 133

Lexington, MA 02420

**Non Profit Org.
US Postage PAID
Lexington, MA
Permit Number
58747**